

COMMUNITY PROFILE

HOMER COMMUNITY SCHOOLS

Papio-Missouri River NRD

Multi-Jurisdictional Hazard Mitigation Plan Update

2021

Local Planning Team

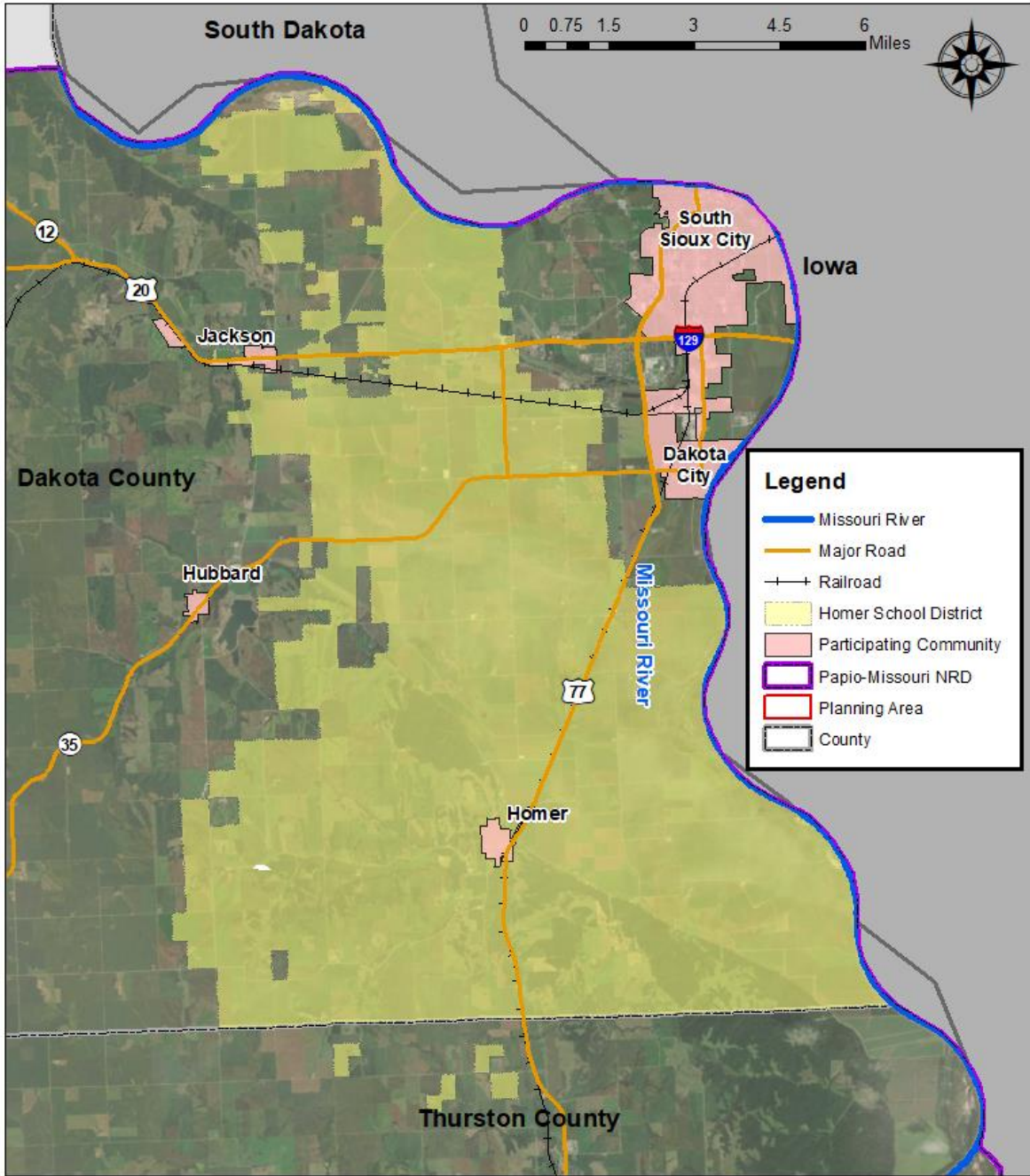
Table HCS.1: Homer Community Schools Local Planning Team

NAME	TITLE	JURISDICTION
GREGG CRUICKSHANK	Superintendent	Homer Community Schools
SETH LEMBKE	Principal	Homer Community Schools
BILL MCPHERRAN	Maintenance Director	Homer Community Schools
JEFF HORNER	Safety Committee Chair	Homer Community Schools

Location and Services

The Homer Community School District is a PK-12 district that operates two schools, one elementary school and one high school. The district serves students residing in the communities of Homer and Jackson as well as portions of rural Dakota County. The school serves the community after normal business hours by providing a location for youth athletic teams to practice, patrons to engage in fitness activities, and for local organizations to meet. In addition to English, Karin is also spoken in the district. The school district provides busing and educational services to students in Homer, Winnebago, Walthill, Dakota City, South Sioux City, and Hubbard.

Figure HCS.1: Homer Community Schools

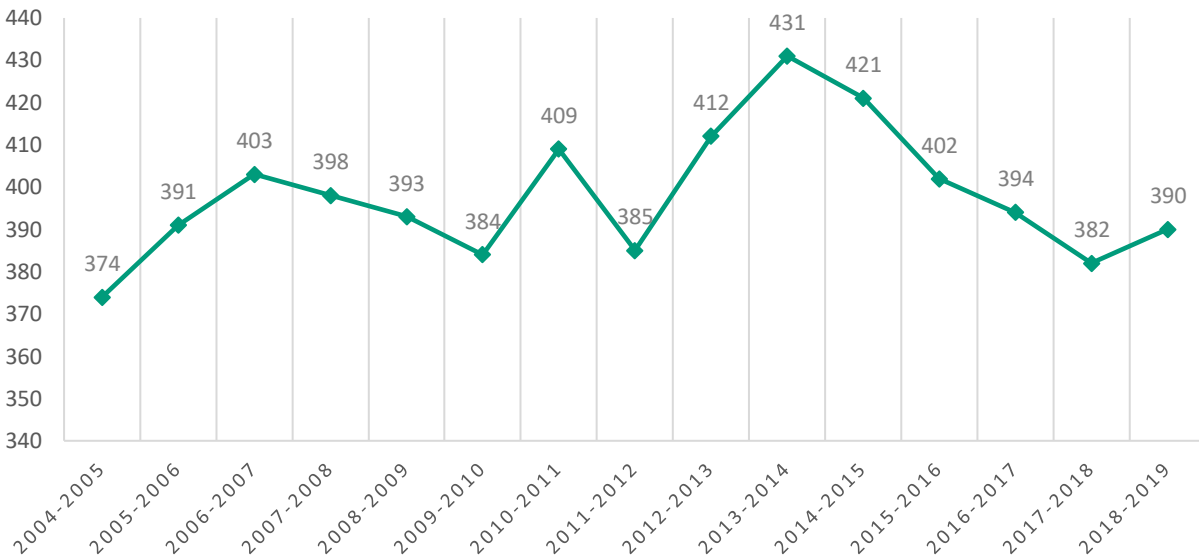


	<p>Created By: MH Date: 2/5/2020 Revised: X/X/2020 Software: ArcGIS 10.7.1 File Name: PapioNRD_HomerSD.mxd</p> <p><small>This map was prepared using information from record drawings supplied by JCO and/or other applicable city, county, federal, or public or private entities. JCO does not guarantee the accuracy of this map or the information used to prepare this map. This is not a scaled plan.</small></p>	<p>2021 Papio-Missouri River NRD Hazard Mitigation Plan Homer Community Schools</p>	
--	---	--	--

Demographics

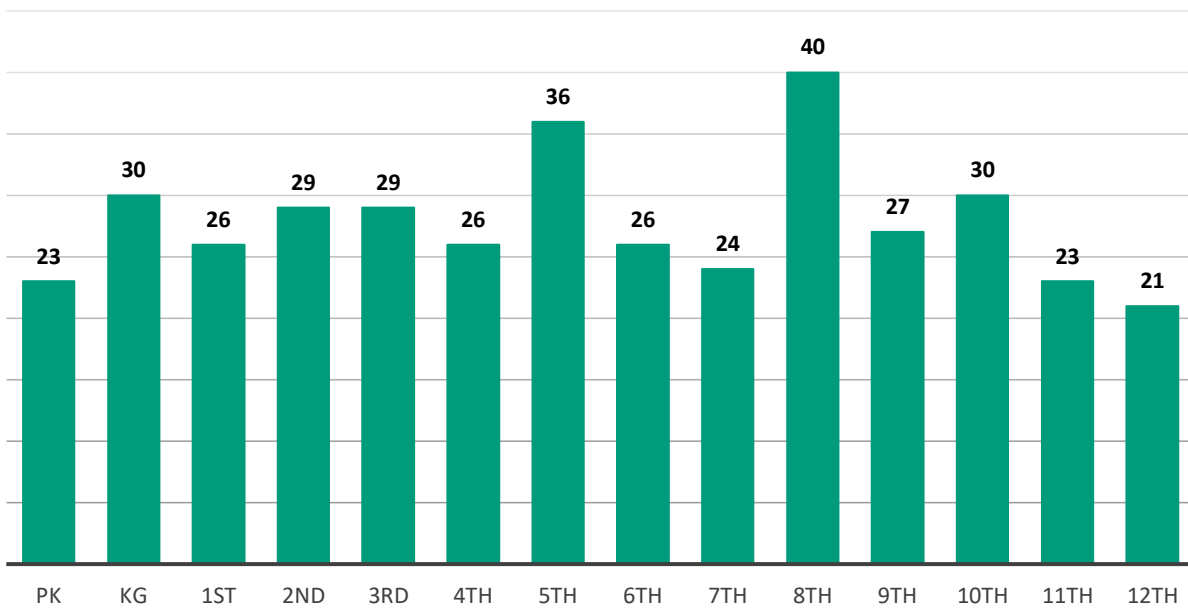
The following figure displays the historical student population trend starting with the 2004-05 school year and ending with the 2018-19 year. It indicates that the student population has declined since 2013. There were approximately 390 students enrolled in Homer Community Schools in 2018-2019.ⁱ The planning team indicated that current enrollment is about 420 students, with 158 of those students being “option enrolled”. The district anticipates little change in student population.

Figure HCS.2: Student Population, 2004-2019



Source: Nebraska Department of Education

Figure HCS.3: Students by Grade, 2018-2019



Source: Nebraska Department of Education

The figure above indicates that the largest number of students are in 8th grade. The lowest population of students are in 12th grade and Pre-kindergarten. According to the Nebraska Department of Education (NDE), 46.4% of students receive either free or reduced priced meals at school in the 2017-18 year. This is higher than the state average of 45.21%. Additionally, about 13% of students are in the Special Education Program. These students may be more vulnerable during a hazardous event than the rest of the student population.

Table HCS.2: Student Statistics, 2018-2019

	DISTRICT	STATE OF NEBRASKA
Free/Reduced Priced Meals	46.41%	45.21%
School Mobility Rate	5.68%	4.61%
English Language Learners	N/A	7.16%
Special Education Students	12.81%	15.48%

Future Development Trends

There has not been much change over the past five years; however, a storage facility was added recently. The school board is considering a small expansion of additional classrooms to the school. These discussions are currently in the preliminary stages. Any new construction will be built according to current building codes. The student population had seen a drop until the last two years. The influx of students could be attributed to more students “option enrolling” from other communities.

Critical Infrastructure/Key Resources

Chemical Storage Fixed Sites

According to the Tier II System reports submitted to the Nebraska Department of Environmental Quality, there is one chemical storage sites that houses hazardous materials in Homer. This facility may be located near Homer Community School facilities.¹ The planning team indicated that if a chemical spill were to occur, access to Highway 77 would potentially be cut off.

Critical Facilities

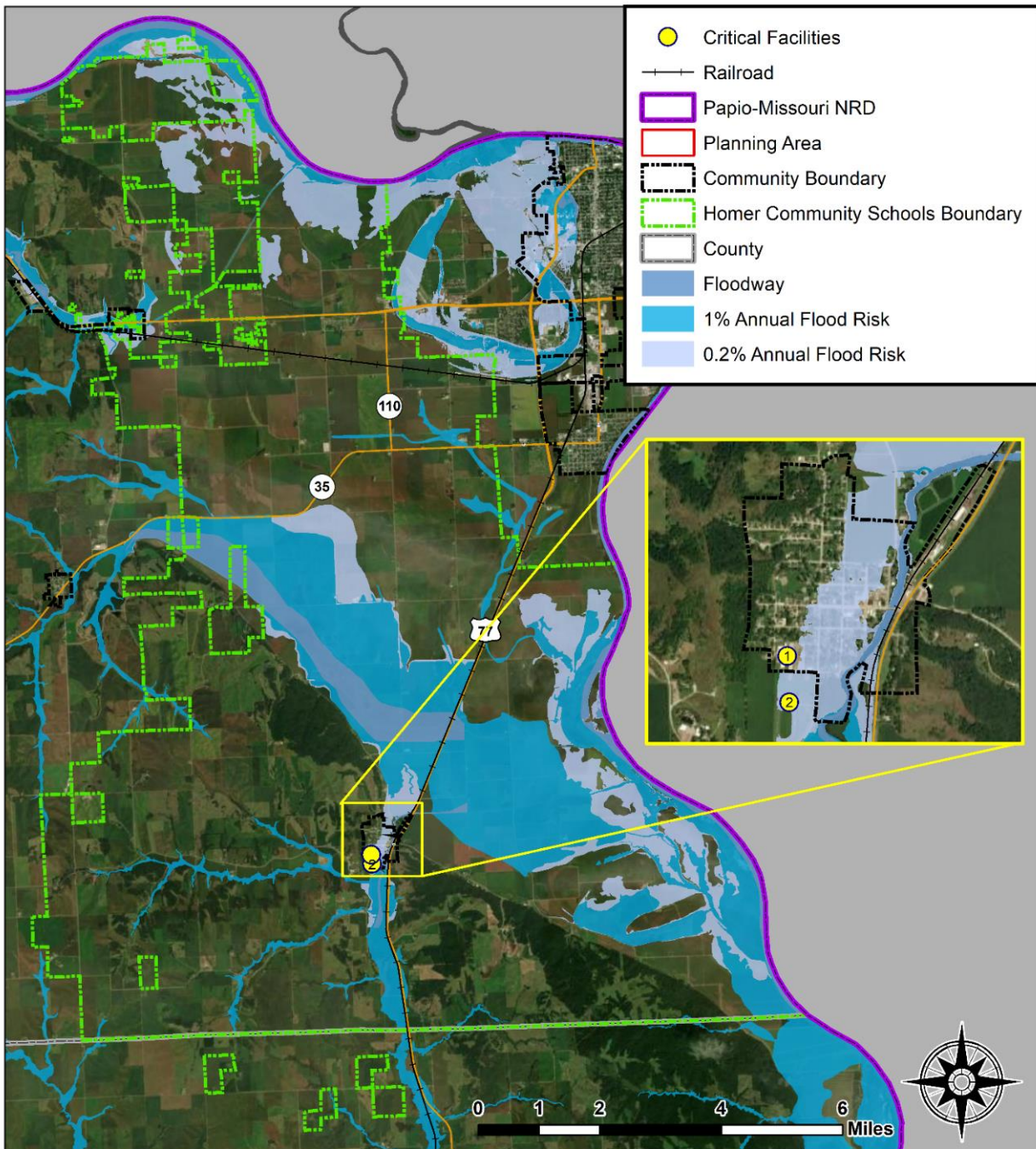
The school district operates one joint facility. School facilities are listed below, along with information indicating the school’s address, number of students and staff, if the facility is used as a shelter during emergencies (i.e. Red Cross Shelter), if the facility is located in the floodplain, and the presence of a tornado safe room and backup power generator. Critical facilities were identified during the original planning process and updated by the local planning team as a part of this plan update. The planning team noted that all facilities have a weather radio present. The following table and figure provide a summary of the critical facilities for the jurisdiction.

Table HCS.4: Critical Facilities

CF #	NAME	# OF STUDENTS	# OF STAFF	SHORT-TERM SHELTER (Y/N)	GENERATOR (Y/N)	FLOODPLAIN (Y/N)
1	Homer Elementary School and High School	420	64	Y	N	N
2	Maintenance Shed	0	0	N	N	Y

¹ Nebraska Department of Environment and Energy. “Search Tier II Data.” Accessed February 2020. <https://deq-iis.ne.gov/tier2/search.faces>.

Figure HCS.3: Critical Facilities





Created By: MB, MW
Date: 8/20/2020
Revised: 11/17/2020
Software: ArcGIS 10.7.1
File Name: ...
PapioNRD_HomerSchoolCF.mxd

This map was prepared using information from record drawings supplied by JEO and/or other applicable city, county, federal, or public or private entities. JEO does not guarantee the accuracy of this map or the information used to prepare this map. This is not a scaled plot.

2021 Papio-Missouri River NRD
Hazard Mitigation Plan

**Homer Community Schools
Critical Facilities**



School Drills and Staff Training

The school district performs various drills throughout the year, including fire, tornado, bus evacuation, and active shooter drills. Fire drills are performed eight times a year. Tornado drills take place four times a year. Bus evacuation drills occur two times a year. Active shooter drills occur once a year.

The district's safety committee trains staff on emergency procedures annually. Students and families are educated about emergency procedures through the district's website, Facebook page, and the student handbook. Parents and staff are notified about emergency events through the School Messenger communication system, the district website, and Facebook page.

Historical Occurrences

See the Dakota County or City of Homer Community profile for historical hazard events.

Hazard Prioritization

For an in-depth discussion regarding area wide hazards, please see Section Four: Risk Assessment. The hazards discussed in detail below were either identified in the previous HMP and determined to still be of top concern or were added by the local planning team based on the identification of hazards of greatest concern, hazard history, and the jurisdiction's capabilities.

Chemical and Radiological Fixed Sites

The local planning team identified Chemical Spills (Transportation) as one of the top concerns for the school district. The school is located close to a rail line, so a derailment or severe damage to a train car carrying chemicals could cause an evacuation or shelter in place at the school depending on the chemical spill incident. The district is also concerned that in the event of an evacuation, the busses have limited access to the highway to safely and quickly evacuate the students and school personnel.

Flooding

Although flooding was not identified as a top concern for the school district, the Village of Homer does have a 1% annual chance floodplain on the east side of the village. The school building is not located within the floodplain, and the district did report any damage from flooding in the past. The planning team noted that the school buildings were not impacted from the 2019 flooding, but emergency dismissal took place to ensure students could get home safely. School was closed for two days until flooded roads receded.

High Winds and Tornadoes

Tornadoes and high winds were identified as top hazards of concern for the school district. Although there have been no tornadoes reported in Homer, tornadoes are common within the planning area and have the potential to cause significant loss of property and life. The school building does not have a designated safe room in the event of a tornado. The school district has a Safety and Crisis Team, a Safety and Crisis Plan, and conducts drills regularly.

Severe Thunderstorms (includes Hail)

Severe thunderstorms are part the regular climate in the region and often bring high winds, hail, lightning, and heavy rain. Thunderstorms can also cause power outages and flash flooding. The school has not had any direct impacts from severe thunderstorms in the past except for hail damage. The school has experienced damage to the school building and equipment, including the air conditioning units, vehicles, and screens during past hail events. According to NCEI data, there have been eleven hail events in the Village of Homer between 1996 and November 2019. The hail events produced hailstones ranging from 0.88 inches to 3 inches. The school's roof was

recently replaced with a Duro Last roof, which is resistant to fire, chemicals, grease, high winds, and punctures. The school has experienced power outages about two to three times in the last five years. The district uses surge protectors on its computers to protect against damage or data loss.

Administration/Capability Assessment

The school district has a superintendent, two principals, one assistant principal, and additional supportive staff. The school board is made up of a six-member panel.ⁱⁱ The district also has a number of additional departments and staff that may be available to implement hazard mitigation initiatives.

- Food Services
- Maintenance
- School Nurse
- Technology Coordinator
- School Counselor
- School Psychologist
- School Administration
- Safety and Crisis Team

Members of the School Administration, the Safety and Crisis Team, and School Maintenance may be involved in implementing hazard mitigation projects. Furthermore, the school district does have the authority to levy taxes for specific purposes.

OVERALL CAPABILITY	LIMITED/MODERATE/HIGH
FINANCIAL RESOURCES NEED TO IMPLEMENT MITIGATION PROJECTS	Limited
STAFF/EXPERTISE TO IMPLEMENT PROJECTS	Limited
COMMUNITY SUPPORT TO IMPLEMENT PROJECTS	Moderate
TIME TO DEVOTE TO HAZARD MITIGATION	Limited

Plan Integration

The emergency operations plan for the school district is called the Safety and Crisis Plan, and it was revised in August of 2015. The district’s Safety and Crisis Plan is reviewed with all staff members annually. The planning team indicated that more emphasis has been given to active shooter/unwanted intruder scenarios in the Safety and Crisis Plan. As noted earlier, each year a number of mock drills are conducted with staff and students. Furthermore, a chemical hazard assessment was completed by EMC Insurance in the spring of 2015. The Nebraska Department of Education requires a safety audit annually. These are completed in the spring of each year.

Plan Maintenance

Hazard Mitigation Plans should be living documents and updated regularly to reflect changes in hazard events, priorities, and mitigation actions. These updates are encouraged to occur after every major disaster event, alongside community planning documents (i.e. annual budgets and Capital Improvement Plans), during the fall before the HMA grant cycle begins, and/or prior to other funding opportunity cycles begin including CDBG, Water Sustainability Fund, Revolving State Fund, or other identified funding mechanisms.

Reviews and updates to this profile will be conducted no less than annually by the Superintendent, Principals, and School Board Members annually. The public, including parents and teachers, are notified of the process at monthly board meetings as appropriate.

Mitigation Strategy

Completed Mitigation Actions

MITIGATION ACTION	EMERGENCY COMMUNICATION
DESCRIPTION	Purchase, replace, or upgrade emergency communication devices and antennas such as portable radios and cell boosters for use during and after a hazardous event.
HAZARD(S)	All hazards
STATUS	Portable radios have been purchased and put in use in each facility.

Continued Mitigation Actions

MITIGATION ACTION	BACK-UP POWER GENERATOR
DESCRIPTION	Provide a portable or stationary source of backup power.
HAZARD(S)	All hazards
ESTIMATED COST	\$30,000+
FUNDING	District funds, HMA
TIMELINE	2-5 years
PRIORITY	High
LEAD AGENCY	Maintenance
STATUS	The district does not currently have funding allocated to start on this project. It will be reviewed regularly to assess feasibility.

MITIGATION ACTION	IMPACT RESISTANT ROOF COVERING
DESCRIPTION	Encourage the use of hail resistant roofing for new construction and roof replacements.
HAZARD(S)	Hail, High Winds, Tornados, Severe Thunderstorms
ESTIMATED COST	Varies
FUNDING	District funds, HMA
TIMELINE	1 year
PRIORITY	High
LEAD AGENCY	Administration, Maintenance
STATUS	The district does not currently have funding allocated to start on this project. It will be reviewed regularly to assess feasibility.

¹ Nebraska Department of Education. December 2019. "2018-2019 Education Profile for District: Homer Public Schools." <https://nep.education.ne.gov/Districts/Index/22-0031-000?DataYears=20182019>.

² Homer Community Schools. Accessed January 2020. <https://www.homerknights.org/>.