

# COMMUNITY PROFILE

## **CITY OF GRETNA**

Papio-Missouri River NRD  
Multi-Jurisdictional Hazard Mitigation Plan Update

2021

## Local Planning Team

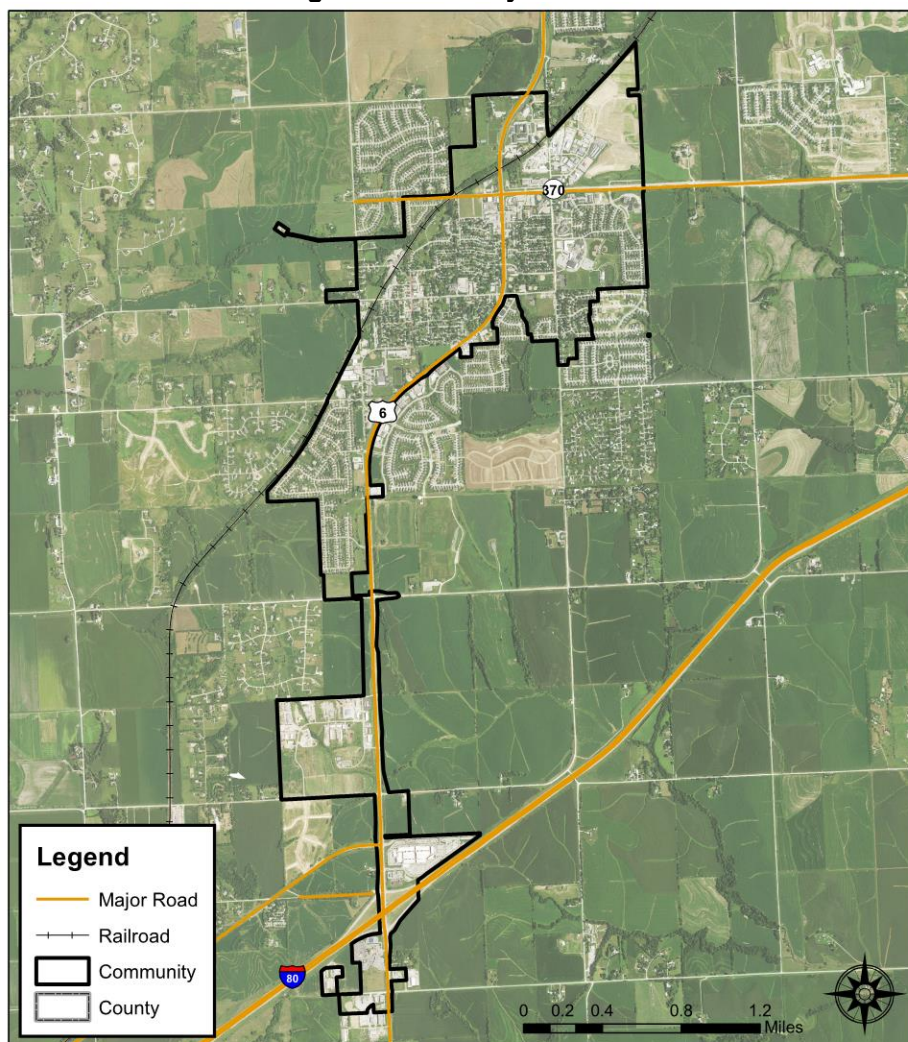
**Table GNA.1: Gretna Local Planning Team**

NAME	TITLE	JURISDICTION
DAN GITTINGER	Development Services Director	City of Gretna
JEFF KOOISTRA	City Administrator	City of Gretna
KRIS FARIS	Public Works Director	City of Gretna

## Location and Geography

The City of Gretna is located in the northwest portion of Sarpy County and covers an area of 2.1 square miles. Gretna is located about 10 miles southwest of Omaha and 40 miles northeast of Lincoln. The Platte and Elkhorn Rivers are only a few miles west of the city.

**Figure GNA.1: City of Gretna**



 <p>Created By: MH Date: 2/20/2020 Revised: X/X/2020 Software: ArcGIS 10.7.1 File Name: PapioNRD_Gretna.mxd</p> <p><small>This map was prepared using information from record drawings supplied by JEO and/or other appropriate city, county, federal, or state or private entities. JEO does not guarantee the accuracy of this map or the information used to prepare this map. This is not a scaled plot.</small></p>	<p>2021 Papio-Missouri River NRD Hazard Mitigation Plan <b>City of Gretna</b></p>	 <p>IOWA</p>
---	---	---

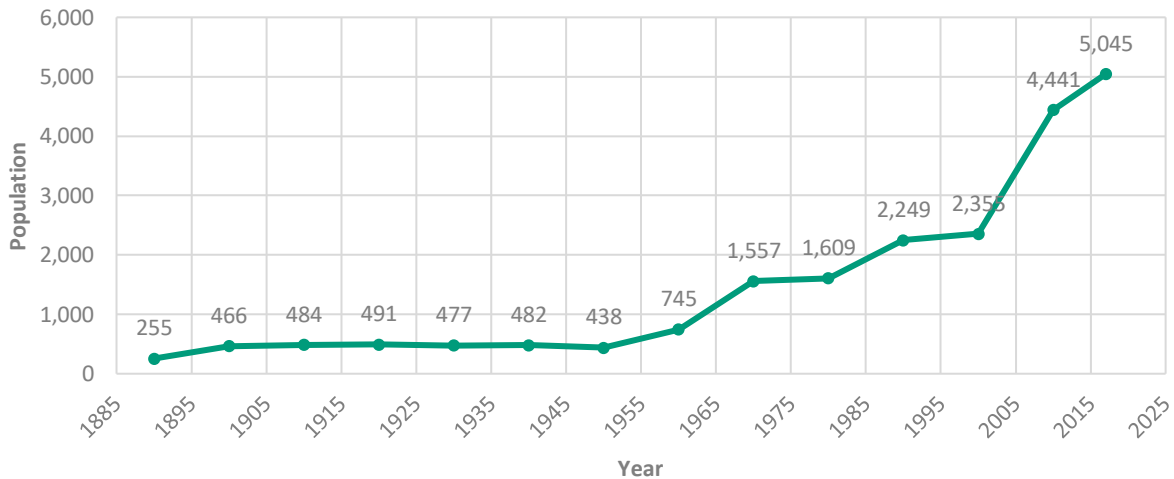
## Transportation

Gretna's major transportation corridors include Highway 6/31, Highway 370, and Interstate 80, which receive 15,610, 12,275, and 43,465 vehicles per day respectively. Gretna has one Burlington Northern rail line and one Amtrak rail line that run along the west and north ends of the city. According to the local planning team, farming-related chemicals are regularly transported along local routes. Transportation information is important to hazard mitigation plans because it suggests possible evacuation corridors in the community, as well as areas more at risk to transportation incidents.

## Demographics

Gretna's population has increased steadily since the 1960s. The current estimated population in 2017 was 5,045. Increasing populations are associated with increased hazard mitigation and emergency planning requirements for development. Increasing populations can also contribute to increasing tax revenues, allowing communities to pursue additional mitigation projects. Gretna's population accounted for approximately 3% percent of Sarpy County's population in 2017.<sup>1</sup>

**Figure GNA.2: Estimated Population 1890 – 2017**



Source: U.S. Census Bureau<sup>2</sup>

The young, elderly, minorities, and poor may be more vulnerable to certain hazards than other groups. In comparison to the county, Gretna's population was:

- Similarly aged.** The median age of Gretna was 35.0 years old in 2017, compared with the county average of 34.2 years. Gretna's population has grown younger since 2010, when the median age was 36.1 years old. Gretna had a larger proportion of people under 20 years old (33.3%) than the county (30.2%) in 2017.<sup>3</sup>
- Similar ethnic diversity.** Since 2010, Gretna grew more ethnically diverse. In 2010, less than 1% of Gretna's population was two or more races. By 2017, about 1% of Gretna's population was Other Races and 1% was two or more races. During that time, Sarpy County had: 4% (Black or African American), grew 2% to 3% (Asian), and 3% (two or more races) from 2010 to 2017 respectively.<sup>4</sup>

<sup>1</sup> United States Census Bureau. "2017 American Fact Finder: S0101: Age and Sex." [database file]. <https://factfinder.census.gov/>.

<sup>2</sup> United States Census Bureau. "2017 American Fact Finder: S0101: Age and Sex." [database file]. <https://factfinder.census.gov/>.

<sup>3</sup> United States Census Bureau. "2017 American Fact Finder: S0101: Age and Sex." [database file]. <https://factfinder.census.gov/>.

<sup>4</sup> United States Census Bureau. "2017 American Fact Finder: DP05: ACS Demographic and Housing Estimates." [database file]. <https://factfinder.census.gov/>.

- **More likely to be at the federal poverty line.** The poverty rate in Gretna (5.9% of all persons living below the federal poverty line) is greater than the county's poverty rate (5.3%) in 2017.<sup>5</sup>

## Employment and Economics

The city's economic base is a mixture of industries. In comparison to Sarpy County, Gretna's economy had:

- **Similar mix of industries.** Employment sectors accounting for 10% or more of employment in Gretna included: Professional and Scientific jobs; Educational Services; and Arts and Entertainment. Sarpy County's employment sectors included Retail, Professional and Scientific jobs, and Educational Services in 2017.<sup>6</sup>
- **Lower household income.** Gretna's median household income in 2017 (\$76,548) was about \$790 lower than the county (\$75,752).<sup>7</sup>
- **Similar mix of long-distance commuters.** About 21.0% percent of workers in Gretna commuted for fewer than 15 minutes, compared with about 28.3% of workers in Sarpy County. About 30.2% of workers in Gretna commute 30 minutes or more to work, compared to about 21.8% of the county workers.<sup>8</sup>

## Major Employers

Major employers include the Gretna School District and Nebraska Crossing Outlet Mall. A large percentage of residents also commute to Omaha and Lincoln for work.

## Housing

In comparison to Sarpy County, Gretna's housing stock was:

- **Less owner occupied.** About 68.4% of occupied housing units in Gretna are owner occupied compared with 69.6% of occupied housing in Sarpy County in 2017.<sup>9</sup>
- **Smaller share of aged housing stock.** Gretna has a smaller share of housing built prior to 1970 than the county (14.9% compared to 19.8%).<sup>10</sup>
- **More single-family homes.** The predominant housing type in the city is single family detached and Gretna contains more multifamily housing with five or more units per structure than the county (22.0% compared to 17.9%). About 76.7% of housing in Gretna was single-family detached, compared with 74.2% of the county's housing. Gretna has no reported mobile and manufactured housing.<sup>11</sup>

This housing information is relevant to hazard mitigation insofar as the age of housing may indicate which housing units were built prior to state building codes being developed. Further, unoccupied housing may suggest that future development may be less likely to occur. Finally, communities with a substantial number of mobile homes may be more vulnerable to the impacts of high winds, tornadoes, and severe winter storms.

<sup>5</sup> United States Census Bureau. "2017 American Fact Finder: DP03: Selected Economic Characteristics." [database file]. <https://factfinder.census.gov/>.

<sup>6</sup> United States Census Bureau. "2017 American Fact Finder: DP03: Selected Economic Characteristics." [database file]. <https://factfinder.census.gov/>.

<sup>7</sup> United States Census Bureau. "2017 American Fact Finder: DP03: Selected Economic Characteristics." [database file]. <https://factfinder.census.gov/>.

<sup>8</sup> United States Census Bureau. "2017 American Fact Finder: S0802: Means of Transportation to Work by Selected Characteristics." [database file]. <https://factfinder.census.gov/>.

<sup>9</sup> United States Census Bureau. "2017 American Fact Finder: DP04: Selected Housing Characteristics." [database file]. <https://factfinder.census.gov/>.

<sup>10</sup> United States Census Bureau. "2017 American Fact Finder: DP04: Selected Housing Characteristics." [database file]. <https://factfinder.census.gov/>.

<sup>11</sup> United States Census Bureau. "2017 American Fact Finder: DP04: Selected Housing Characteristics." [database file]. <https://factfinder.census.gov/>.

## Future Development Trends

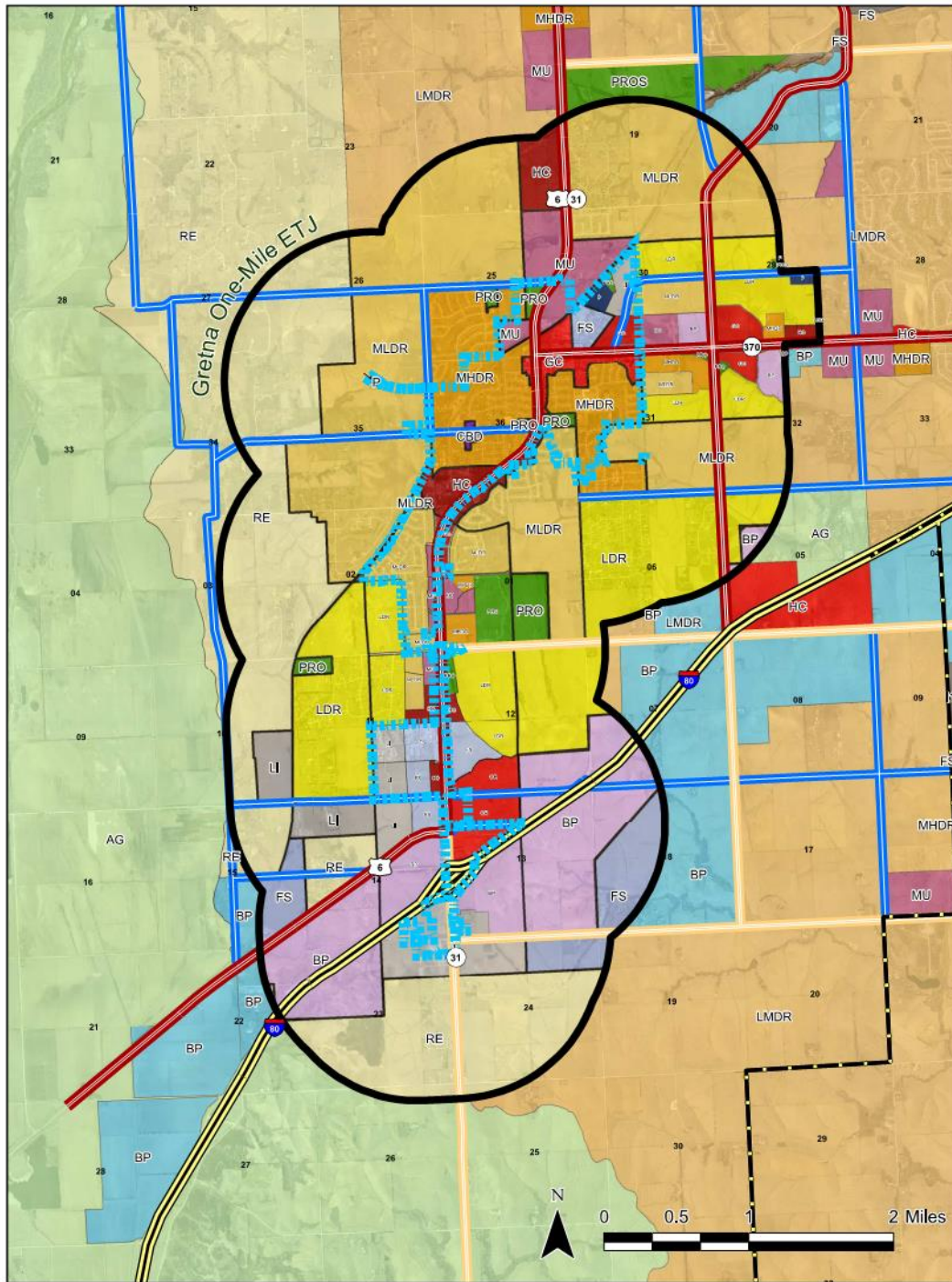
In the last five years the city has experienced growth in the form of new residential and commercial subdivisions. The planning team indicated that strip malls have increased as well, being occupied by doctor, dentist, and physical therapy offices. New daycares and preschools have also opened in the city and industrial businesses have been added, including a concrete plant, and plumbing, electrical, lawn care, and construction businesses. These businesses employ anywhere from 5 to 50 workers each. Only a small amount of buildings, located in older residential neighborhoods, have been demolished in recent years. Additionally, a new city well was built to provide water services to residents. At this time the city indicated current water resources are sufficient, but if the city continues to grow additional wells may be installed or the city may contract with MUD for water supplies.

Two residential subdivisions are currently being built and three more are in the infrastructure stages. The city is located on a ridge, and so there is not much concern for developments being built in a floodplain. The planning team indicated that Gretna's increasing population trend can be attributed to a few main factors. These include the city's proximity to Omaha and Lincoln, the excellent school system which is attractive to young families; and the professional jobs that are available in the area.



SECTION SEVEN: CITY OF GRETNA COMMUNITY PROFILE

Figure GNA.3 Future Land Use Map



City of Gretna Future Land Use			
	Agriculture		Highway Commercial
	Residential Estates		Business Park Commercial
	Low Density Residential		Flex Space (G)/Business Park (SC)
	Medium to Low Density Residential		Light Industrial
	Medium to High Density Residential		Heavy Industrial
	Mixed Use		Public / Quasi Public
	General Commercial		Parks, Recreation, and Open Space
	Central Business District		Gretna Corporate Limits
			One-Mile Extraterritorial Jurisdiction
			Growth Area Boundary
			Interstate Highway
			Major Arterial
			Other Arterial
			Collector
			Local Roads

**City of Gretna**  
Sarpy County Nebraska  
Future Land Use

Created By: CPS  
Date: Jan. 2009  
Revised: May 2017  
Software: ArcGIS 10.4  
File: 14027120

This map was prepared solely for informational purposes. It is not intended to be used for any other purpose, and the City of Gretna does not warrant the accuracy or completeness of the information presented on this map. This is not a contract.

## Structural Inventory and Valuation

The planning team requested GIS parcel data from the County Assessor as of December 2019. This data allowed the planning team to analyze the location, number, and value of property improvements at the parcel level. The data did not contain the number of structures on each parcel. A summary of the results of this analysis is provided in the following table. One structure in Gretna has been removed from the floodplain via LOMA. A summary of LOMAs identified for Gretna can be found in the table below.

**Table GNA.2: Gretna Parcel Valuation**

NUMBER OF PARCELS	NUMBER OF IMPROVEMENTS	TOTAL IMPROVEMENT VALUE	NUMBER OF IMPROVEMENTS IN FLOODPLAIN	VALUE OF IMPROVEMENTS IN FLOODPLAIN	PERCENT OF IMPROVEMENTS IN FLOODPLAIN
1,756	1,645	\$427,028,391	0	\$0	0%

Source: County Assessor

**Table JKN.3: Jackson Flood Map Products**

TYPE OF PRODUCT	PRODUCT ID	EFFECTIVE DATE	DETAILS
LOMA	15-07-2023A-310375	9/23/2015	Property removed from SFHA

Source: FEMA Flood Map Service Center

## Critical Infrastructure/Key Resources

### Chemical Storage Fixed Sites

According to the Tier II System reports submitted to the Nebraska Department of Environment and Energy, there are 17 chemical storage sites in Gretna that contain hazardous chemicals.

**Table GNA.3: Chemical Storage Fixed Sites**

FACILITY NAME	ADDRESS	LOCATED IN FLOODPLAIN?
GRETNA GAS & LUBE	610 N Highway 6	N
PILOT FLYING J 686	15010 S Highway 31	N
FARMERS UNION CO-OP OF GRETNA	112 Railroad Ave	N
NDOT MELIA HILL	15525 S 234th St	N
FARMERS UNION CO-OP OF GRETNA	Jct S 216th & W Angus Rd	N
FARMERS UNION CO-OP OF GRETNA	820 Burns Pl	N
CENTURYLINK	1255 McKenna Ave	N
OPPD SUBSTATION NO 1281	12282 S 180th St	N
OPPD SUBSTATION NO 1287	12209 Highway 6	N
SCHWAN'S CONSUMER BRANDS	20235 Husker Dr	N
SHAMROCK CONCRETE CO	11617 S 216th St	N
LYMAN-RICHEY SAND & GRAVEL 50	17171 S 255th St	Y – Floodway
LYMAN-RICHEY SAND & GRAVEL 51	25498 Pflug Rd	Y
PLAINS EQUIPMENT GROUP	15151 S Highway 31	N
VERIZON WIRELESS	21201 Harrison St	N
LYMAN-RICHEY GRETNA BOTTOMS 52	24802 Fairview Rd	Y
GRETNA PUBLIC WORKS	20090 Husker Dr	N
CONCRETE SUPPLY	20020 Husker Dr	N

Source: Nebraska Department of Environment and Energy<sup>12</sup>

The planning team indicated that the main concern for fixed chemical spills is the Burlington Railroad near the Farmers Union Co-op. No chemical spill events have occurred locally.

<sup>12</sup> Nebraska Department of Environment and Energy. "Search Tier II Data." Accessed February 2020. <https://deg-iis.ne.gov/tier2/search.faces>.

### Critical Facilities

Each participating jurisdiction identified critical facilities vital for disaster response, providing shelter to the public, and essential for returning the jurisdiction's functions to normal during and after a disaster per the FEMA Community Lifelines guidance. Critical facilities were identified during the original planning process and updated by the local planning team as a part of this plan update.

The following table and figure provide a summary of the critical facilities for the jurisdiction.

**Table GNA.4: Critical Facilities**

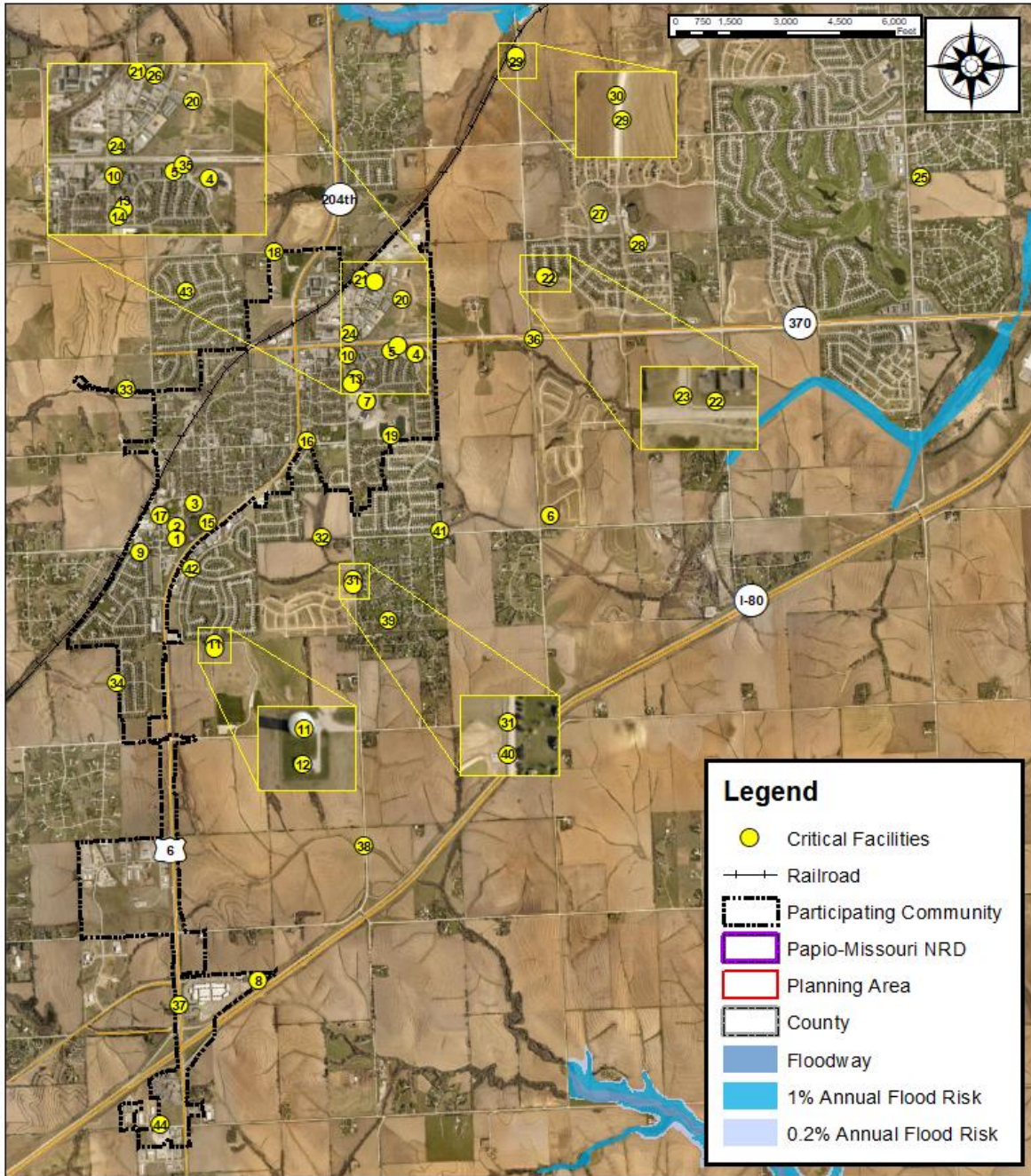
CF #	TYPE	NAME	SHORT-TERM SHELTER (Y/N)	GENERATOR (Y/N)	FLOODPLAIN (Y/N)
1	Food, Water, and Shelter	Gretna Public Schools (Admin.)	N	N	N
2	Food, Water, and Shelter	Gretna Middle School	Y	N	N
3	Food, Water, and Shelter	Gretna Elementary School	Y	N	N
4	Food, Water, and Shelter	Squire John Thomas Elementary	Y	N	N
5	Food, Water, and Shelter	Falling Waters Elementary (#6)	Y	N	N
6	Food, Water, and Shelter	Harvest Hills Elementary	Y	N	N
7	Food, Water, and Shelter	Gretna High School	Y	N	N
8	Food, Water, and Shelter	Nebraska Crossing Lift Station	N	Y	N
9	Food, Water, and Shelter	Little Red School House	N	N	N
10	Food, Water, and Shelter	Water Tower I (North)	N	N	N
11	Food, Water, and Shelter	Water Tower II (South)	N	Y	N
12	Food, Water, and Shelter	Gretna Pumping Station	N/A	Y	N
13	Health and Medical	Hillcrest/Silver Ridge (Memory Care)	N	N	N
14	Health and Medical	Hillcrest/Silver Ridge (Assisted Living)	N	N	N
15	Health and Medical	Gretna Community Living Center	N	Y	N
16	Food, Water, and Shelter	Water Well 2	N	N	N
17	Food, Water, and Shelter	Water Well 3	N	N	N
18	Food, Water, and Shelter	Water Well 4	N	Y	N
19	Food, Water, and Shelter	Water Well 5	N	Y	N
20	Food, Water, and Shelter	Water Well 6	N	Y	N
21	Food, Water, and Shelter	Water Well 7	N	N	N
22	Food, Water, and Shelter	Water Well 8	N	N	N
23	Food, Water, and Shelter	Water Well 9 (pending)	N	N	N




## SECTION SEVEN: CITY OF GRETNA COMMUNITY PROFILE

CF #	TYPE	NAME	SHORT-TERM SHELTER (Y/N)	GENERATOR (Y/N)	FLOODPLAIN (Y/N)
24	Safety and Security	Gretna Fire and Rescue	Y	Y	N
25	Safety and Security	Gretna Fire and Rescue 2 <sup>nd</sup> Station	Y	Y	N
26	Safety and Security	Public Works Building	Y	Y	N
27	Food, Water, and Shelter	Aspen Creek Elementary	Y	Y	N
28	Food, Water, and Shelter	Aspen Creek Middle School	Y	Y	N
29	Safety and Security	Aspen Creek Monitoring Station	N	N	N
30	Safety and Security	City of Gretna Monitoring Station	N	N	N
31	Food, Water, and Shelter	Schram Lift Station	N	Y	N
32	Food, Water, and Shelter	Plum Creek Lift Station	N	N	N
33	Food, Water, and Shelter	Main Lift Station	N	Y	N
34	Food, Water, and Shelter	Chestnut Ridge Lift Station	N	N	N
35	Food, Water, and Shelter	Northridge 1 Lift Station	N	N	N
36	Food, Water, and Shelter	Aspen Creek Lift Station	N	Y	N
37	Food, Water, and Shelter	Sewage Treatment Plant	N	Y	N
38	Food, Water, and Shelter	Buffalo Creek Lift Station	N	Y	N
39	Food, Water, and Shelter	Lakeview Lift Station #1	N	Y	N
40	Food, Water, and Shelter	Lakeview Lift Station #2	N	Y	N
41	Food, Water, and Shelter	Covington Lift Station SID#258	N	Y	N
42	Food, Water, and Shelter	Standing Stone Lift Station	N	Y	N
43	Food, Water, and Shelter	Lincoln Place Lift Station	N	Y	N
44	Food, Water, and Shelter	Flying J Plaza Water Treatment	N	N	N

Figure GNA.4: Critical Facilities






Created By: MB  
Date: 8/20/2020  
Revised: 8/20/2020  
Software: ArcGIS 10.7.1  
File Name: PapioNRD\_CountyCF.mxd

This map was prepared using information from various drawings supplied by JEO and/or other applicable city, county, federal or public or private entities. JEO does not guarantee the accuracy of this map or the information used to prepare this map. This is not a scaled plot.

2021 Papio-Missouri River NRD  
Hazard Mitigation Plan

---

**City of Gretna  
Critical Facilities**



## Historical Occurrences

See the Sarpy County community profile for historical hazard events.

## Hazard Prioritization

For an in-depth discussion regarding area wide hazards, please see Section Four: Risk Assessment. The hazards discussed in detail below were either identified in the previous HMP and determined to still be of top concern or were added by the local planning team based on the identification of hazards of greatest concern, hazard history, and the jurisdiction's capabilities.

### Chemical Spills (Fixed Sites and Transportation)

The local planning team identified chemical transportation and fixed chemical sites as top concerns for the city. Schools and a nursing home are known to be located near chemical fixed sites. These vulnerable populations should be educated about the threat and appropriate response in the event of a spill. It is not known what types or quantities of chemicals are transported on average through Gretna. According to the Pipeline and Hazardous Materials Safety Administration, there have not been any chemical spills in Gretna during transportation. The U.S. Coast Guard National Response Center also reported no spills from fixed storage locations.

### Flooding

Flooding was identified as a hazard of top concern by the planning team. According to NCEI data, there have been eight flood events within Gretna between 1996 and November 2019. No damage to property or crops was reported. The city does not have floodplain areas within the city limits, but a significant floodplain exists in Gretna's future growth area on the west side of the city towards the Platte River. The local planning team identified the Lyman Highlands and Forest Run Subdivision as areas that have poor stormwater drainage. Poor drainage may lead to localized flooding in these areas. Major flooding in 2019 damaged a gravel road and two road ditches within the city. A new backhoe has been purchased to assist in road ditch maintenance.

Gretna participates in the NFIP and has two policies in-force for \$455,000, and there are no repetitive flood loss properties in the city. Sarpy County has a Flood Insurance Study dated May 3, 2010 which includes Bellevue, Gretna, La Vista, Papillion, and Springfield. The study notes principal flood problems include heavy rainfall, snowmelt, or combinations on the Missouri River, Platte River, and the Elkhorn River. Flooding along Big Papillion Creek, Buffalo Creek, Papillion Creek, South Branch Papillion Creek, Springfield Creek, and West Papillion Creek normally occurs from heavy rainfall. The Missouri River historically was a major flood problem for Sarpy County. This, however, has changed considerably since the construction of six dams and reservoirs on the Missouri River in the Dakotas and Montana. The completion of Missouri River Levee Unit R-616 in May 1979 (Reference 13) protects from flooding that part of Sarpy County located downstream from the City of Bellevue extraterritorial zoning limits to Papillion Creek. Missouri River Levee Unit R-613 is located between Papillion Creek and the Platte River. These flood control structures eliminated the threat of a 0.2-percent-annual-chance flood from the Missouri River for those areas of Sarpy County and the City of Bellevue landward of these levee systems. However, due mainly to tributary inflow downstream from the main stem dams and ice conditions, those areas of Sarpy County and Bellevue riverward of the levee system are subject to flooding. These areas include agricultural areas, recreational areas, residential areas, and barge terminals. The Platte River has also historically been a major flood problem for Sarpy County. Unfortunately, unlike the Missouri River, few flood control measures exist along the Platte River that reduce flood damages. Ice conditions on the Missouri River, Platte River, and Elkhorn River can also have a significant effect on both the degree of flooding and frequency of flooding

in Sarpy County. Flood protection measures primarily include dams, reservoirs, and levees along major waterways. The Papio-Missouri River NRD has had a continuing program since 1968 to construct channel and levee improvements along Papillion Creek and Big Papillion Creek. These improvements are complete from Capehart Road in Bellevue, Nebraska, upstream through Sarpy County except for tie-back levees along Mud Creek, and a short portion on the right bank upstream from the West Papillion Creek confluence. Channel straightening by local interests has occurred on Papillion Creek, Big Papillion Creek, and West Papillion Creek, and on portions of Buffalo Creek, Springfield Creek, Mud Creek, Betz Road Ditch, and Squaw Creek. Tieback levees have been constructed along the downstream portions of Mud Creek, Betz Road Ditch, and Squaw Creek, also by local interests.

Additionally, Gretna is included in the Big Papillion-Mosquito Watershed Flood Risk Report (9/12/2016). The report utilized HAZUS to estimate potential losses for flood event scenarios. For the City of Gretna the inventory estimated value was \$793,600,000.

### **High Winds and Tornadoes**

The local planning team identified tornadoes and high winds as a significant concern for the City of Gretna. According to NCEI data, there were 19 high wind events in Sarpy County and two tornadoes that passed near Gretna from 1996 to 2019. The tornadoes were EF0 and EF2, but neither caused reported damages. Tornadoes are common within the planning area and have the potential to cause significant loss of property and life. There are no designated safe rooms in Gretna. If an event were to occur, city hall and churches have been identified to be available to those seeking shelter. The planning team indicated that safe rooms will be built in the future as part of new school and daycare structures. There are no educational outreach activities being done at this time.

### **Public Health Emergency**

Public health emergency is a new hazard of top concern for this plan update. Concerns for public health emergencies stemmed from the development and spread of the novel coronavirus disease (COVID-19). Sarpy County has seen numerous confirmed cases of the virus and monitors the virus at the county level. City officials have not been notified of specific cases in Gretna but did close all city offices to the public. The city did not have sufficient resources to have employees work from home, but council meetings have utilized Zoom. The local planning team noted Zoom is not a long term solution as the format is not user friendly for community feedback. The city takes directives and guidance from the Sarpy County Health Department. There is no hospital or main health facilities in Gretna, the nearest hospital is Lakeside Hospital in Omaha. No other major disease outbreaks have impacted the city in the past.

### **Severe Thunderstorms (includes Hail)**

Severe thunderstorms are common events in the planning area and were identified as a top concern for the community. Severe thunderstorms include strong winds, heavy rain, hail, and lightning strikes. The NCEI recorded 124 severe thunderstorm events in Sarpy County from 1996 to 2019, with \$461,500 in damages to property. Although there are no reported damages specific to hail in Gretna, the local planning team confirmed that damages to buildings and windows requiring repairs occur frequently. Over the last three years, many roofs have required repairs, and some have needed total replacement. The community has experienced hail stones reaching 4.5 inches. However, most hail stones are around 1 inch or less.

### **Severe Winter Storms**

Severe winter weather is part of the regular climate for Gretna and was identified as a top concern for the city. Severe winter storms include blizzards, ice accumulation, extreme cold, heavy snow,



and winter storms. These storms can cause power outages during bitterly cold temperatures, road closures, and economic impacts. According to the NCEI, there were 85 severe winter storm events in Sarpy County from 1996 through November 2019. These storms resulted in \$8,009,000 in property damage and \$150,000 in crop damage across the county. Due to the frequency of these events, snow removal resources are typically sufficient for local events and equipment is replaced on a regular basis. About fifty percent of the city's power lines have been buried, making them less susceptible to damage during winter storms. Highways 6, 31, and 370 are designated snow routes.

### **Social Media Engagement**

The Papio-Missouri River NRD launched a "Would You Rather" themed social media campaign during the 2021 HMP update to garner local input on hazard priorities, residential capabilities, and action items residents would like to see the community take in the future to reduce potential impacts from hazard events.

The City of Gretna had 31 reported respondents in the campaign (based upon general zip code analysis). According to those respondents the top hazards of concern for them included: High Winds and Tornadoes, Severe Winter Storms, and Drought and Extreme Heat. While high winds and tornadoes and severe winter storms were identified by the local planning team as hazards of top concern for the city, drought and extreme heat was not indicating a disconnect between residential concerns and city efforts.

Some ways residents have indicated they had reduced their personal risk to hazard events included: building homes with fire resistant materials, signed up for emergency alert texts, attended safety related trainings or certifications, and identified safe places in home and work environments for hazard events.

The local respondents noted text alerts, radio alerts, and social media posts are the preferred methods of notification for major events and protecting people and critical facilities, preventing development in hazardous areas, improving emergency coordination, improving emergency response capabilities, and community notification are all very important when identifying hazard mitigation projects. Noted actions to improve hazard mitigation in the community included: developing and sharing community action plans and lessons; maintain, update, and/or expand severe weather notification systems (specifically for text alerts); develop additional community shelters; restrict future development in flood prone areas; and institute a paid Gretna Fire Department to accommodate the growing city.

## **Governance**

A community's governance indicates the number of boards or offices that may be available to help implement hazard mitigation actions. Gretna has a number of offices or departments that may be involved in implementing hazard mitigation initiatives. The city has a mayor, a four-member council, and the following offices.

- Clerk
- City Administrator
- Arbor Society
- Board of Adjustments
- Library Board
- Mayor's Advisory Park Committee
- Planning Commission



- Building & Zoning Department
- Volunteer Fire & Rescue Department
- Public Works Department
- Parks & Recreation Department
- Utility Department
- Fire Department and EMS

## Capability Assessment

The capability assessment consisted of a Capability Assessment Survey completed by the jurisdiction and a review of local existing policies, regulations, plans, and the programs. The survey is used to gather information regarding the jurisdiction's planning and regulatory capability; administrative and technical capability; fiscal capability; and educational and outreach capability.

**Table GNA.5: Capability Assessment**

SURVEY COMPONENTS/SUBCOMPONENTS		Yes/No
<b>PLANNING &amp; REGULATORY CAPABILITY</b>	Comprehensive Plan	Yes (2017)
	Capital Improvements Plan	Yes (2020)
	Economic Development Plan	Yes
	Emergency Operational Plan	County
	Floodplain Management Plan	No
	Storm Water Management Plan	Yes (2020)
	Zoning Ordinance	Yes (2019)
	Subdivision Regulation/Ordinance	Yes (2014)
	Floodplain Ordinance	No
	Building Codes	Yes (2019)
	National Flood Insurance Program	Yes
	Community Rating System	No
	Other (if any)	
<b>ADMINISTRATIVE &amp; TECHNICAL CAPABILITY</b>	Planning Commission	Yes
	Floodplain Administration	Yes
	GIS Capabilities	Yes (County)
	Chief Building Official	Yes
	Civil Engineering	Contracted
	Local Staff Who Can Assess Community's Vulnerability to Hazards	Yes
	Grant Manager	No
	Mutual Aid Agreement	Yes
	Other (if any)	
<b>FISCAL CAPABILITY</b>	Capital Improvement Plan/ 1 & 6 Year plan	Yes
	Applied for grants in the past	No
	Awarded a grant in the past	No
	Authority to Levy Taxes for Specific Purposes such as Mitigation Projects	Yes
	Gas/Electric Service Fees	No

SURVEY COMPONENTS/SUBCOMPONENTS		Yes/No
	Storm Water Service Fees	No
	Water/Sewer Service Fees	Yes
	Development Impact Fees	Yes
	General Obligation Revenue or Special Tax Bonds	Yes
	Other (if any)	
<b>EDUCATION &amp; OUTREACH CAPABILITY</b>	Local citizen groups or non-profit organizations focused on environmental protection, emergency preparedness, access and functional needs populations, etc. Ex. CERT Teams, Red Cross, etc.	No
	Ongoing public education or information program (e.g., responsible water use, fire safety, household preparedness, environmental education)	Yes
	Natural Disaster or Safety related school programs	No
	StormReady Certification	No
	Firewise Communities Certification	No
	Tree City USA	Yes
	Other (if any)	

OVERALL CAPABILITY	LIMITED/MODERATE/HIGH
<b>FINANCIAL RESOURCES NEED TO IMPLEMENT MITIGATION PROJECTS</b>	Moderate
<b>STAFF/EXPERTISE TO IMPLEMENT PROJECTS</b>	Moderate
<b>COMMUNITY SUPPORT TO IMPLEMENT PROJECTS</b>	High
<b>TIME TO DEVOTE TO HAZARD MITIGATION</b>	Moderate

## Plan Integration

The Local Emergency Operations Plan (LEOP) for Gretna, which was last updated in 2016, is an annex of Sarpy County's LEOP. The LEOP is anticipated to be updated in 2021. It is an all hazards plan that does not address specific natural and man-made disasters. It provides a clear assignment of responsibility in case of an emergency.

The local planning team noted the municipal budget is sufficient to maintaining current facilities and exploring additional projects. The city has experienced consistent growth in the budget. Currently backup generators and new sewer lift station sites have earmarked funds in the budget. The city is also undertaking a large park project to include a pool, recreation facility, baseball and softball complexes, amphitheater, and a dog park. The City's Capital Improvement Plan is updated annually with the annual budget and current plans include installing back up generators at sewer pumping stations and new public facilities (new public works building).

The City's Comprehensive Plan was updated in 2020 and does not address natural hazards. The plan has goals and objectives aimed at safe growth, encourages infill development, and

preservation of open spaces in hazard-prone areas. The local planning team noted once the 2020 Census is complete, the City will become a First Class city which will expand the jurisdiction and will require an update to the comprehensive plan. The zoning ordinance will also be updated alongside the new Comprehensive Plan. The current ordinances prohibits development in the floodplain, requires two-foot BFE, and limits development in the ETJ.

### Plan Maintenance

Hazard Mitigation Plans should be living documents and updated regularly to reflect changes in hazard events, priorities, and mitigation actions. These updates are encouraged to occur after every major disaster event, alongside community planning documents (i.e. annual budgets and Capital Improvement Plans), during the fall before the HMA grant cycle begins, and/or prior to other funding opportunity cycles begin including CDBG, Water Sustainability Fund, Revolving State Fund, or other identified funding mechanisms.

The local planning team is responsible for reviewing and updating this community profile as changes occur or after a major event. The local planning team will include the Public Works Director, Fire Chief, City Administrator, and Development Services Director. The local planning team will review the plan no less than annually and will include the public in the review and revision process by: updating the city website, social media posts, posting in the city newsletter and sharing information at city council meetings.

### Mitigation Strategy

#### Completed Mitigation Actions

MITIGATION ACTION		BACK UP MUNICIPAL RECORDS
DESCRIPTION	Develop protocol for back-up of critical municipal records	
HAZARD(S)	All hazards	
STATUS	The city has obtained new software for records management.	

#### Continued Mitigation Actions

MITIGATION ACTION		ALERT SIRENS
DESCRIPTION	Perform an evaluation of existing alert sirens in order to determine sirens which should be replaced or upgraded. Install new sirens where lacking and remote activation.	
HAZARD(S)	Severe Thunderstorms, High Winds and Tornadoes, Severe Winter Storms	
ESTIMATED COST	\$15,000+	
FUNDING	General Fund	
TIMELINE	2-5 years	
PRIORITY	Medium	
LEAD AGENCY	City Administrator, Sarpy County EMA	
STATUS	This is a new mitigation action.	

MITIGATION ACTION		BACK-UP POWER GENERATOR
<b>DESCRIPTION</b>	Provide a portable or stationary source of backup power to redundant power supplies, municipal wells, lift stations, and other critical facilities and shelters.	
<b>HAZARD(S)</b>	All hazards	
<b>ESTIMATED COST</b>	\$50,000+	
<b>FUNDING</b>	City Utilities Fund, HMGP, BRIC	
<b>TIMELINE</b>	2-5 years	
<b>PRIORITY</b>	Medium	
<b>LEAD AGENCY</b>	Utilities	
<b>STATUS</b>	The city continues to add backup generators to various sites as funding allows.	

MITIGATION ACTION		CIVIL SERVICE IMPROVEMENTS
<b>DESCRIPTION</b>	Improve emergency rescue and response equipment and facilities by providing additional or updating existing emergency response equipment. This includes ATV's, fire trucks, water tanks/trunks, snow removal equipment, etc.	
<b>HAZARD(S)</b>	All hazards	
<b>ESTIMATED COST</b>	Varies	
<b>FUNDING</b>	Bonds, General taxes	
<b>TIMELINE</b>	2-5 years	
<b>PRIORITY</b>	Medium	
<b>LEAD AGENCY</b>	Fire Department, Public Works	
<b>STATUS</b>	The construction of a new fire station and purchase of a new ladder fire truck to support local resources during larger fires.	

MITIGATION ACTION		EMERGENCY COMMUNICATION
<b>DESCRIPTION</b>	Establish an action plan to improve communication between agencies to better assist residents and businesses during and following emergencies. Establish inter-operable communications.	
<b>HAZARD(S)</b>	All hazards	
<b>ESTIMATED COST</b>	\$20,000+	
<b>FUNDING</b>	Keno funds, Homeland Security	
<b>TIMELINE</b>	2-5 years	
<b>PRIORITY</b>	Medium	
<b>LEAD AGENCY</b>	Fire Department, Police Department	
<b>STATUS</b>	The Fire and Street Department are currently working to replace an older communication system.	

MITIGATION ACTION		HIGHER BUILDING CODES AND STANDARDS
<b>DESCRIPTION</b>	Promote the use of higher codes and standards such as the Fortified for Safer Living Standard in order to provide greater protection for any new construction or retrofit.	
<b>HAZARD(S)</b>	All hazards	
<b>ESTIMATED COST</b>	Staff time	
<b>FUNDING</b>	General funds	
<b>TIMELINE</b>	2-5 years	
<b>PRIORITY</b>	High	
<b>LEAD AGENCY</b>	Building Official	
<b>STATUS</b>	A new design for well system structures has been put in place to better protect facilities. The city has also adopted the 2018 IBC and codes for ADA compliance. The city is currently adopting the 2018 energy code.	

MITIGATION ACTION		INTERGOVERNMENTAL SUPPORT
<b>DESCRIPTION</b>	Support other local governmental entities, such as fire departments, schools, and townships in the identification and pursuit of mitigation actions.	
<b>HAZARD(S)</b>	All hazards	
<b>ESTIMATED COST</b>	Staff Time	
<b>FUNDING</b>	General funds	
<b>TIMELINE</b>	2-5 years	
<b>PRIORITY</b>	Medium	
<b>LEAD AGENCY</b>	Public Works, Fire Department	
<b>STATUS</b>	City government meets with the local school district on a regular basis to discuss all aspects of mitigation. The Building Department continues to work with the fire department on safe access of sites. The school district and city are currently evaluating storm shelter options.	

MITIGATION ACTION		STORMWATER SYSTEM AND DRAINAGE IMPROVEMENTS
<b>DESCRIPTION</b>	Continue to work towards a solution for improved stormwater/drainage improvements for properties downstream of development	
<b>HAZARD(S)</b>	Flooding, Severe Thunderstorms	
<b>ESTIMATED COST</b>	\$500,000	
<b>FUNDING</b>	Bonds, Impact Fees, NRD Funding (Programmed for funding after 2018 PMNRD)	
<b>TIMELINE</b>	2-5 years	
<b>PRIORITY</b>	Medium	
<b>LEAD AGENCY</b>	Public Works, City Engineer Consultant	
<b>STATUS</b>	This project is in progress. A new NRD drainage structure will be built in 2022 to protect properties east of 204 <sup>th</sup> & Schram Rd	



MITIGATION ACTION		WEATHER RADIOS
DESCRIPTION	Conduct an inventory of weather radios at schools and other critical facilities and provide new radios as needed	
HAZARD(S)	All hazards	
ESTIMATED COST	\$50/radio	
FUNDING	General Fund	
TIMELINE	2-5 years	
PRIORITY	Medium	
LEAD AGENCY	Gretna Fire Department	
STATUS	This project has not yet been started.	

**Removed Mitigation Actions:**

MITIGATION ACTION		INFRASTRUCTURE HARDENING
DESCRIPTION	Harden critical facilities to withstand high winds, hail, heavy snow, etc.	
HAZARD (S)	Tornadoes and High Winds, Severe Winter Storms, Flooding	
REASON FOR REMOVAL	This is no longer a priority for the city as current codes are adequate to protect infrastructure.	

MITIGATION ACTION		MAINTAIN GOOD STANDING WITH NFIP
DESCRIPTION	Maintain good standing with National Flood Insurance Program (NFIP) including floodplain management practices/ requirements and regulation enforcements and updates.	
HAZARD(S)	Flooding	
REASON FOR REMOVAL	While the community will continue to participate in the NFIP, this project can be removed as it is considered an ongoing effort.	