

# COMMUNITY PROFILE

## **FORT CALHOUN COMMUNITY SCHOOLS**

Papio-Missouri River NRD  
Multi-Jurisdictional Hazard Mitigation Plan Update

2021

## Local Planning Team

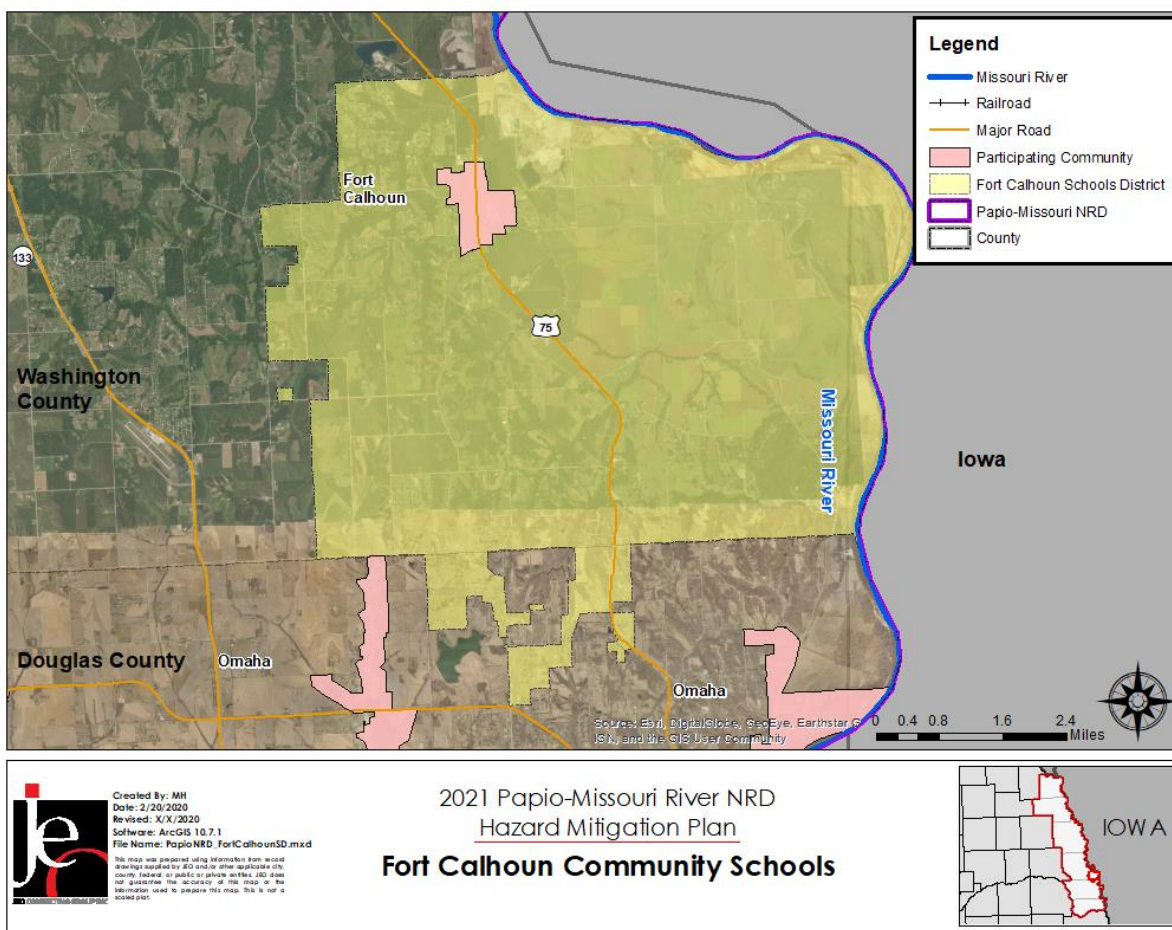
**Table FCS.1: Fort Calhoun Community Schools Local Planning Team**

NAME	TITLE	JURISDICTION
JERRY GREEN	Superintendent	Fort Calhoun Community Schools

## Location and Services

Fort Calhoun Community Schools operates three schools with one elementary school, a combined junior and senior high school, and a learning center. The school district provides services to students in the community of Fort Calhoun, southeastern Washington County, and small portions of northern Douglas County. Some students opt-into the transition program at the learning center, primarily from Blair. The primary language in the district is English, but the school also has Spanish speaking students.

**Figure FCS.1: For Calhoun Community School District**

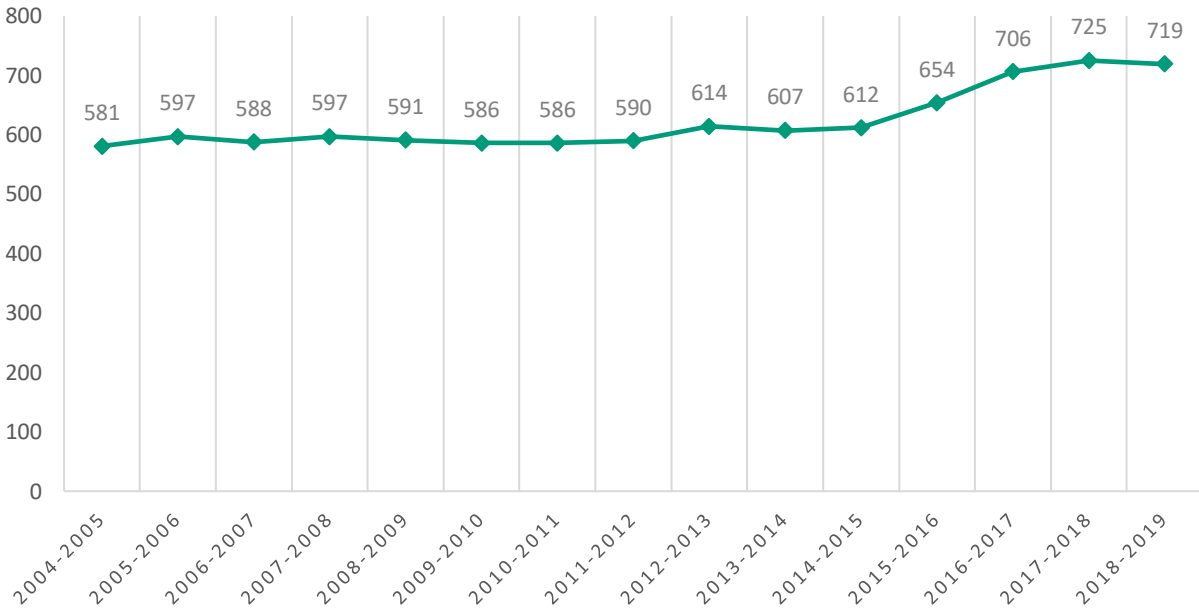


## Demographics

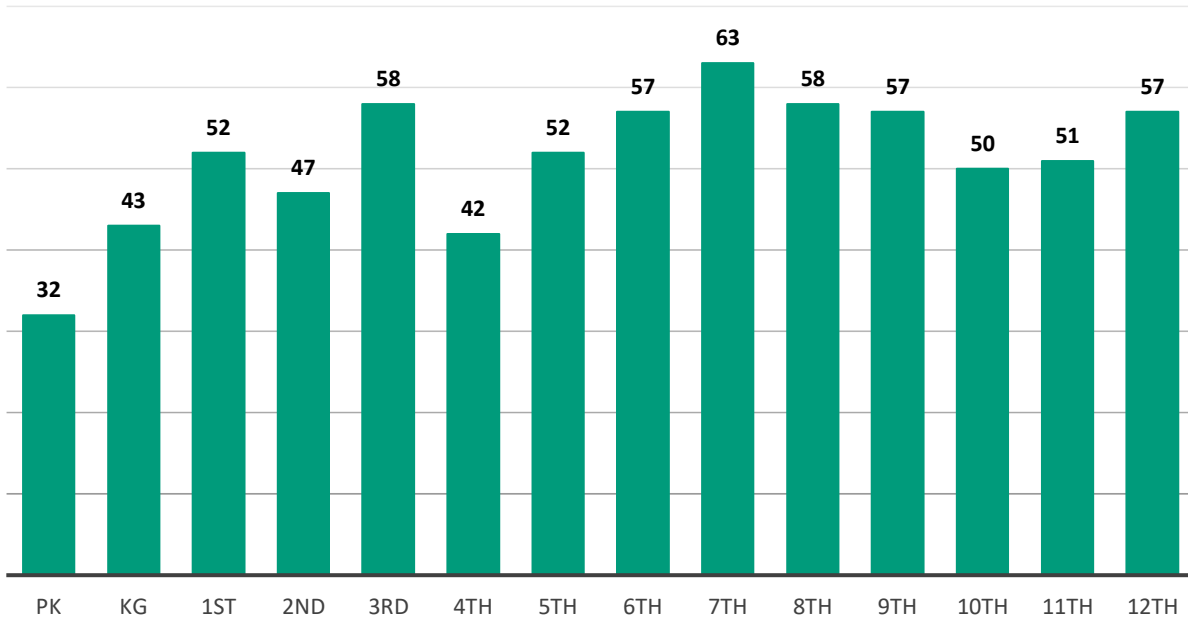
The following figure displays the historical student population trend starting with the 2004-05 school year and ending with the 2018-19 year. It indicates that the student population has held relatively stable over the past several years. There are approximately 719 students enrolled in Fort Calhoun Community Schools.<sup>1</sup> The local planning team indicated there little anticipated change in student population.

SECTION SEVEN: FORT CALHOUN COMMUNITY SCHOOLS COMMUNITY PROFILE

**Figure FCS.2: Student Population, 2004-2019**



**Figure FCS.3: Students by Grade, 2018-2019**



Source: Nebraska Department of Education

The figure above indicates that the largest number of students are in 7<sup>th</sup> grade. The lowest population of students are in Pre-kindergarten. According to the Nebraska Department of Education (NDE), 18.36% of students receive either free or reduced priced meals at school in the 2017-18 year. This is lower than the state average of 45.21%. Additionally, about 16% of students are in the Special Education Program. These students may be more vulnerable during a hazardous event than the rest of the student population.

**Table FCS.2: Student Statistics, 2018-2019**

	DISTRICT	STATE OF NEBRASKA
Free/Reduced Priced Meals	18.36%	45.21%
School Mobility Rate	1.39%	4.61%
English Language Learners	N/A	7.16%
Special Education Students	16.01%	15.48%

## Future Development Trends

The district has had several changes in the past five years including a building project at the Junior/Senior High School in 2016 and a four-room remodel at the Elementary. As of 2020, the district was in the process of building a new gymnasium at the elementary school. There are no other plans for remodels or projects in the coming five years. The overall student body of Fort Calhoun Community Schools is relatively stable, which the local planning team attributed a lack of overall growth and development in the surrounding areas.

## Critical Infrastructure/Key Resources

### Chemical Storage Fixed Sites

According to the Tier II System reports submitted to the Nebraska Department of Environmental Quality, there is one chemical storage sites that houses hazardous materials in Fort Calhoun. These facilities may be located near Fort Calhoun Community School facilities.<sup>1</sup>

### Critical Facilities

The school district operates four facilities. School facilities are listed below, along with information indicating the school's address, number of students and staff, if the facility is used as a shelter during emergencies (i.e. Red Cross Shelter), if the facility is located in the floodplain, and the presence of a tornado safe room and backup power generator. Critical facilities were identified during the original planning process and updated by the local planning team as a part of this plan update. The following table and figure provide a summary of the critical facilities for the jurisdiction.

<sup>1</sup> Nebraska Department of Environment and Energy. "Search Tier II Data." Accessed November 2018. <https://deq-iis.ne.gov/tier2/search.faces>.

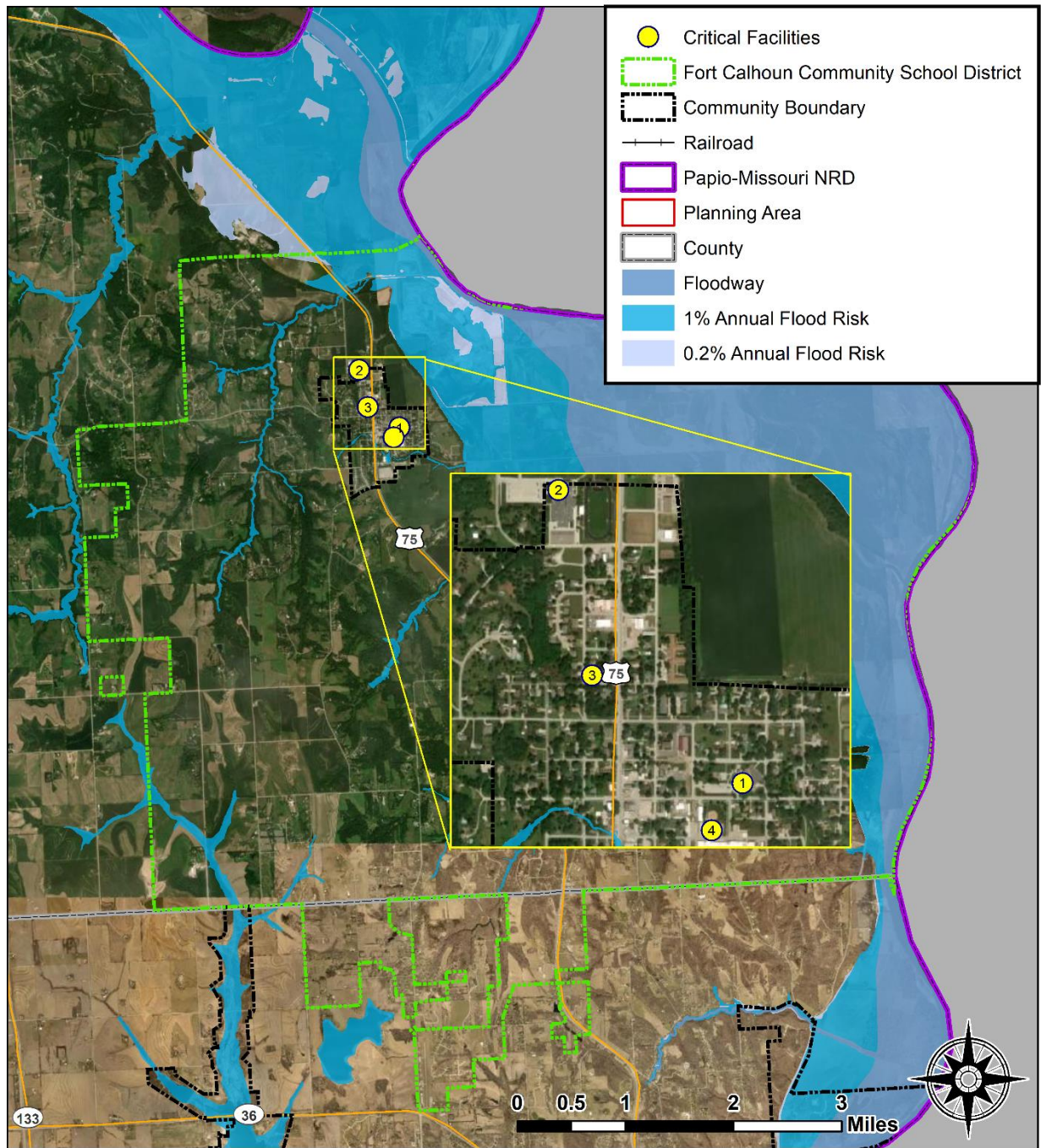
**Table FCS.4: Critical Facilities**

CF #	NAME	# OF STUDENTS	# OF STAFF	SHORT-TERM SHELTER (Y/N)	GENERATOR (Y/N)	FLOODPLAIN (Y/N)
1	Fort Calhoun Elementary School	407	57	Y	N	N
2	Fort Calhoun Junior/Senior School and District Offices	358	52	Y	Y	N
3	Pioneer Learning Center	N/A	N/A	N	N	N
4	Community Building	0	N/A	N	Y	N

There are also two outbuildings and a bus barn at the Junior/Senior High School and a garage at the elementary school used to house school equipment. All school facilities currently have weather radios.



Figure FCS.4: Critical Facilities



<p><b>JEO CONSULTING GROUP INC.</b></p>	<p>Created By: MW                  Revised: 11/25/2020                  Software: ArcGIS 10.7.1                  File Name: ...                  PapioNRD_FortCalhounSchoolCF.mxd</p> <p>This map was prepared using information from record drawings supplied by JEO and/or other applicable city, county, federal, or public or private entities. JEO does not guarantee the accuracy of this map or the information used to prepare this map. This is not a scaled plot.</p>	<p>2021 Papio-Missouri River NRD                  Hazard Mitigation Plan</p> <hr/> <p><b>Fort Calhoun                  Community Schools                  Critical Facilities</b></p>	
---	---	---	--

### **School Drills and Staff Training**

Students and staff participate in a number of drills throughout the school year. The school follows the Standard Response Protocol (SRP Model) for the types of drills that are covered, which include:

- Fire drills – monthly
- Tornado – twice annually
- Shelter in Place/Intruder – twice annually

Staff undergo training annually for drills and emergency procedures, as well as watch monthly safety videos shared by the Administration. The district utilizes email and mail lists to share information with staff, students, and parents about emergency procedures and events.

### **Historical Occurrences**

See the Washington County or City of Fort Calhoun community profile for historical hazard events.

### **Hazard Prioritization**

For an in-depth discussion regarding area wide hazards, please see Section Four: Risk Assessment. The hazards discussed in detail below were either identified in the previous HMP and determined to still be of top concern or were added by the local planning team based on the identification of hazards of greatest concern, hazard history, and the jurisdiction's capabilities.

#### **Flooding**

Due to the proximity to the Missouri River, flooding is a concern for the school district. In 2011, the Missouri River flooded for most of the summer. Over 60 homes were flooded in the city and an additional 200 homes in the county. Over 500 people were displaced in the county, which led to the City of Fort Calhoun opening up the high school for flood victims. The March 2019 flood event also impacted the City of Fort Calhoun including road closures and damages and localized flooding throughout the city. These flood events did not cause damage to school facilities.

#### **High Winds and Tornadoes**

High winds and tornadoes have the potential for injury, loss of life, and significant property damages. An EF0 tornado passed through Fort Calhoun in 2016 but no injuries, fatalities, or property damages were reported from this event. The school district conducts tornado drills twice per year for students and staff. The district has not reported any damages to facilities as a result of high winds. The district has identified the need for reinforced safe rooms in the district and the elementary school renovation will include a shelter.

#### **Severe Thunderstorms**

Severe thunderstorms are common across the planning area and include impacts from heavy rain, strong winds, lightning, and hail. Damaging hail is a real threat to the school district. Hail can range in size from under an inch to over four inches in diameter, and when combined with gusting winds, can do significant damage to buildings, roofs, windows, lighting, HVAC systems, and vehicles. School roofs have been replaced in the past and major events have caused school closures.

#### **Severe Winter Storms**

Severe winter storms occur on an annual basis in the region and can impact school facilities. The winter of 2009-2010 was especially harsh for the region with snowfall totals for the season between 40 and 50 inches. The Christmas Winter Storm of 2009 brought up to a foot of snow or more in many places across the district as well as high winds gusting well over 40 mph. These

winds in combination with the heavy snow produced widespread visibilities below a quarter mile and dangerous low wind chills. The school district was closed for several days as a result. Primary concerns for severe winter storms include safety for students and staff and power outages.

### Administration/Capability Assessment

The school district has a superintendent, two principals, one assistant principal, and several supportive staff. The school board is made up of a six-member panel.<sup>ii</sup> The district also has a number of additional departments and staff that may be available to implement hazard mitigation initiatives.

- Maintenance
- Food Services
- Technology Coordinator
- Business Manager
- School Counselor
- School Psychologist
- School Nurse

Mostly likely the Business Manager, Maintenance, and Superintendent’s Office would be involved in implementing any hazard mitigation projects. Fort Calhoun Community Schools has the authority to levy taxes for specific purposes.

OVERALL CAPABILITY	LIMITED/MODERATE/HIGH
<b>FINANCIAL RESOURCES NEED TO IMPLEMENT MITIGATION PROJECTS</b>	Limited
<b>STAFF/EXPERTISE TO IMPLEMENT PROJECTS</b>	Limited
<b>COMMUNITY SUPPORT TO IMPLEMENT PROJECTS</b>	High
<b>TIME TO DEVOTE TO HAZARD MITIGATION</b>	Limited

### Plan Integration

The emergency operations plan for the school district is called the Safety and Crisis Plan, and it is revised or updated annually. The district’s Safety and Security Plan is reviewed with all staff members. A Threat Assessment Team was established in 2017 for the district who reviews all materials and assists with drills.

As noted earlier, each year a number of mock drills are conducted with staff and students. The Nebraska Department of Education requires a safety audit annually. These are completed in the spring of each year.

### Plan Maintenance

Hazard Mitigation Plans should be living documents and updated regularly to reflect changes in hazard events, priorities, and mitigation actions. These updates are encouraged to occur after every major disaster event, alongside community planning documents (i.e. annual budgets and Capital Improvement Plans), during the fall before the HMA grant cycle begins, and/or prior to other funding opportunity cycles begin including CDBG, Water Sustainability Fund, Revolving State Fund, or other identified funding mechanisms.



Reviews and updates to this profile will be conducted no less than annually by the Superintendent, Principals, and School Board Members. The public, including parents and teachers, are notified of the process at monthly board meetings as appropriate.

## Mitigation Strategy

### Completed Mitigation Actions

MITIGATION ACTION		EMERGENCY COMMUNICATION DEVICES
DESCRIPTION	Purchase, replace, or upgrade emergency communication devices such as portable radios for use during and after a hazardous event.	
HAZARD(S)	All	
STATUS	All radios on busses have been replaced. Administrative staff and outdoor supervisor staff all carry radios.	

### Continued Mitigation Actions

MITIGATION ACTION		BACK-UP POWER GENERATORS
DESCRIPTION	Provide a portable or stationary source of backup power to schools, administration centers, supply centers, safe rooms, etc.	
HAZARD(S)	All hazards	
ESTIMATED COST	\$50,000+/generator	
FUNDING	General funds, HMGP	
TIMELINE	2-5 years	
PRIORITY	Medium	
LEAD AGENCY	Maintenance	
STATUS	The Jr/Sn High has a generator, but an additional generator is needed for the elementary school.	

MITIGATION ACTION		STORM SHELTERS/SAFE ROOMS
DESCRIPTION	Install or retrofit facilities to add safe rooms in needed schools for safety of students and staff	
HAZARD(S)	Tornados, Severe Thunderstorms, High Winds	
ESTIMATED COST	\$200-\$300/sf stand alone; \$150-200/sf addition/retrofit	
FUNDING	Bonds, HMGP, BRIC	
TIMELINE	5+ years	
PRIORITY	Medium	
LEAD AGENCY	Business Manager	
STATUS	Elementary school building project includes a safe room. Anticipated completion in 2021.	

<sup>1</sup> Nebraska Department of Education. December 2019. "2018-2019 Education Profile for District: Fort Calhoun Public Schools." <https://nep.education.ne.gov/Districts/Index/89-0001-000?DataYears=20182019>.

<sup>2</sup> Fort Calhoun Community Schools. Accessed January 2020. <https://www.fortcalhounschools.org/>.